

#3177.2725 LETICIA TUNIC DRESS

[m o c h a]
modern + comfort

LETICIA TUNIC DRESS

FABRIC SUGGESTIONS

Light weight to medium weight: Cotton, Cotton Blends, Washed Cotton, Washed Linen or Linen Blends, Lawn, Voile

FABRIC REQUIRED

44" (110 cm): 3 yds (XS, X, M) 3 1/4 yds (L, XL, XXL)
58" (147 cm): 2 3/4 yds

NOTIONS

(1) Spool of coordinating thread

TOOL LIST

Ruler, Sewing scissors, Craft scissors, Chalk pencil, Pencil, Sewing machine, Serger, Iron, Iron board, Weights, Pins, Needle, Shape tool, Safety pin, Rotary cutter & mat (Optional)

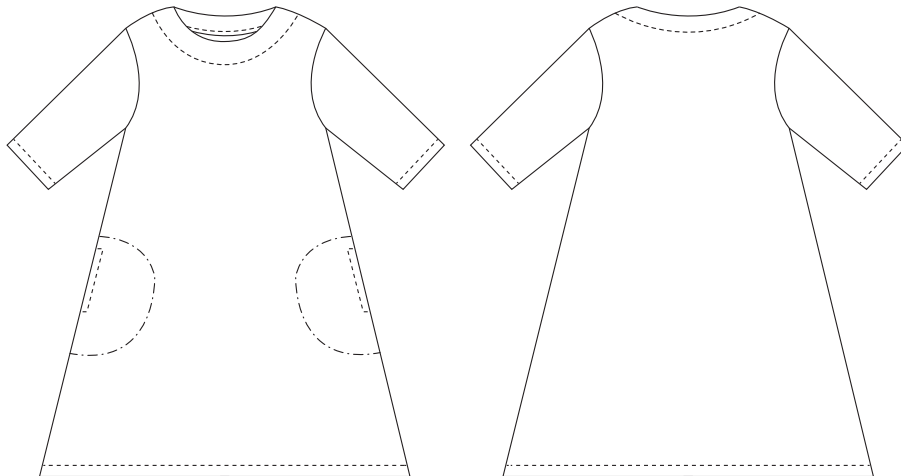
WOMEN SIZE: XS (4), S (6), M (8), L (10), XL (12), XXL (14)

The Leticia Tunic Dress! A simple and versatile dress that can be easily made and worn! Due to its loose design, you can easily fit and make without any discomfort. Moreover, this dress can easily be worn as a tunic, wearing jeans underneath can create layer and bring uniqueness to the whole outfit. Or you can simply wear it as a dress with cute Mary Janes! Making this dress with gingham fabric is greatly recommended due to its great simple nature.

START THE LETICIA TUNIC DRESS TODAY!

WOMEN SIZE CHART

UNIT	SIZE	2	4	6	8	10	12	14	16	18	20	22	24	26	28
Inches	Bust	31	33	35	37	39	41	43	45	47	49	51	53	55	57
	Waist	25	27	29	31	33	35	37	39	41	43	45	47	49	51
	Hip	34	36	38	40	42	44	46	48	50	52	54	56	58	60
centimeter	Bust	79	84	89	94	99	104	109	114	119	124	129	134	139	144
	Waist	63	68	73	78	83	88	93	98	103	108	113	118	123	128
	Hip	87	92	97	102	107	112	117	122	127	132	137	142	147	152



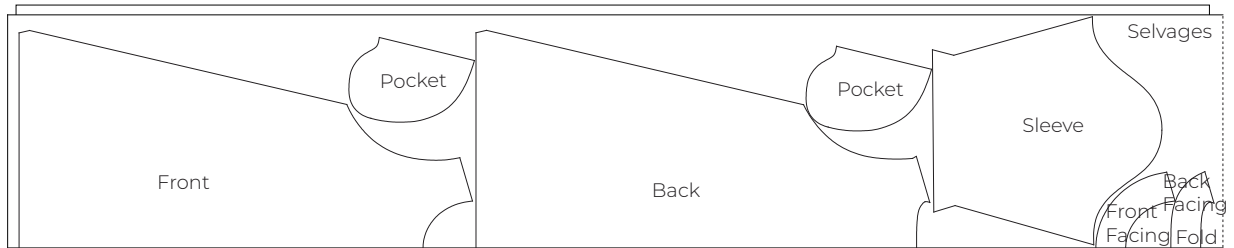
0 612797 378738

©2020 ithinksew.com
All Right Reserved.

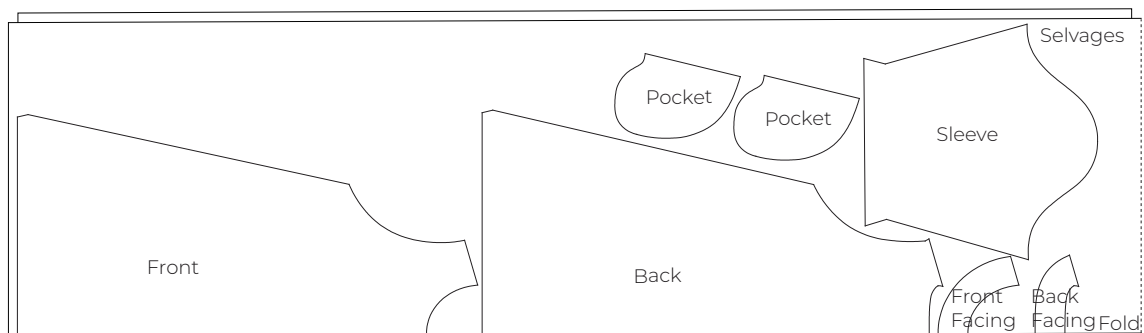
LETICIA TUNIC DRESS

WOMEN SIZE: XS(4), S(6), M(8), L(10), XL(12), XXL(14)

CUTTING LAYOUT



44"-wide fabric suggested cutting layout (XS, S, M, L, XL, XXL)



58"-wide fabric suggested cutting layout (XS, S, M, L, XL, XXL)

CUTTING

Draw the patterns directly onto the wrong side of the fabric following the cutting layout. Cut out all the pieces.

- (1) Front on fold
- (1) Back on fold
- (2) Sleeves (1 and 1 Reversed)
- (1) Front Facing on fold
- (1) Back Facing on fold
- (4) Side Pockets (2 and 2 Reversed)

OVERLOCKING

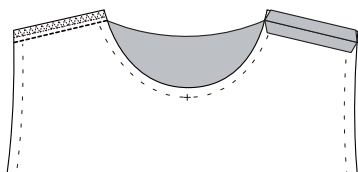
Overlock the Front, Back pieces, Front Neck Facing and Back Neck Facing by overlocking all the seams but the neck lines. Overlock the Sleeves and Pocket Pieces.

NOTE

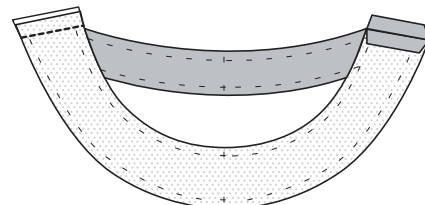
- * All units are in inches.
- * 3/8" Seam allowance included
- * 2" Sleeve Hem allowance included
- * 2" Hem allowance included

ASSEMBLE THE FACING

1 Place the front and back piece with right sides together. Pin and sew the front to the back pieces along the shoulder seams, backstitching on both ends. Press the seams open.



2 Place the front facing piece and back facing with right sides together. Pin and stitch the shoulder seams, backstitching at both ends. Press the seams open.



BEFORE SEWING

1. Please read the instructions before sewing.
2. Prewash your fabric. Some fabrics will shrink after washing. Some of the fabric's color may wash out.
3. If you are having a hard time deciding which size will fit for you, check your closet first. Find a similar clothing (size and material) and then measure both of them. Subtract both seams.

If you make the top, measure the bust size. In the case of pants measure the waist, hip, inseam, and outseam. For skirts, measure the waist, and hip.

4. Always backstitch at the beginning and end. Unless specified not to.

FABRIC TERMS

SELVAGE: Finished edges of the fabric, usually printed with the designer's name, the producer's logo, and the colors used for the fabric represented in numbers.

GRAIN: The parallel lengthwise and crosswise on a piece of fabric.

BIAS: The 45 degrees on a piece of fabric, also known as the cross grain, it is the most elastic direction.

BASIC SEWING TERMS

SEAM ALLOWANCE: A small area between the edge and the sewing line on the two, or more, materials being stitched together, the size of the seam allowance may differ for each project.

TOPSTITCHING: A form of stitching used for reinforcement or decorative purposes on the project, topstitching is always exposed and it is recommended to use fancy threads.

HEM: The border or edge piece of a sewn piece of cloth or clothing, made by folding it down and sewing it in place.

BASTING: Long and loose stitches, to prepare for sewing two materials together, the longer the stitch and less the tension between the stitches, the easier it is to remove the baste when necessary.

NOTCHING: Small cuttings or trims that are done on an outward curve (convex seams); always notch within the seam allowance not through it.

CLIPPING: Small cuttings or trims that are done on an inward curve (concave seams); always clip within the seam allowance not through it.

FACING: Used to finish raw edges as a partial lining for center front, neckline, or armhole edges.

FOLD LINE: A line indicating the edge of the pattern piece that has to be placed on fold of fabric.

GRADING: The process of converting a pattern from size to another.

PLEATS: A decoration made by folding one part over the other and securing it in place.

RAW EDGE: An unfinished edge of the seam.

METRIC CONVERSION CHART

Inches	Centimeters	Inches	Centimeters
0.25	0.635	11	27.94
0.5	1.27	12	30.48
0.75	1.905	13	33.02
1	2.54	14	35.56
1.25	3.175	15	38.1
1.5	3.81	16	40.64
1.75	4.445	17	43.18
2	5.08	18	45.72
2.25	5.715	19	48.26
2.5	6.35	20	50.8
2.75	6.985	21	53.34
3	7.62	22	55.88
3.25	8.255	23	58.42
3.5	8.89	24	60.96
3.75	9.525	25	63.5
4	10.16	26	66.04
4.25	10.795	27	68.58
4.5	11.43	28	71.12
4.75	12.065	29	73.66
5	12.7	30	76.2
5.25	13.335	31	78.74
5.5	13.97	32	81.28
5.75	14.605	33	83.82
6	15.24	34	86.36
6.25	15.875	35	88.9
6.5	16.51	36	91.44
6.75	17.145	37	93.98
7	17.78	38	96.52
7.25	18.415	39	99.06
7.5	19.05	40	101.6
7.75	19.685	41	104.14
8	20.32	42	106.68
8.25	20.955	43	109.22
8.5	21.59	44	111.76
8.75	22.225	45	114.3
9	22.86	46	116.84
9.25	23.495	47	119.38
9.5	24.13	48	121.92
9.75	24.765	49	124.46
10	25.4	50	127