



KAITLYN LONG DRESS

FINISHED SIZE: 3Y, 4Y, 5Y, 6Y, 7Y, 8Y, 9Y, 10Y

Kaitlyn Long Dress, a unique dress that's designed to suit any girl perfectly. Due to its spacious figure the dress can be worn during most physical activities with ease. With its pleated top the dress is bound to look absolutely stunning! Perfect for any little girls! The Kaitlyn Long Dress!



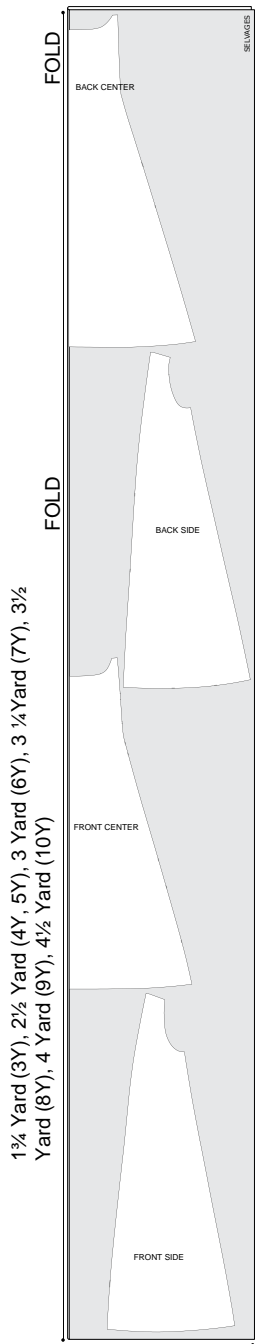
KAITLYN LONG DRESS

FINISHED SIZE: 3Y, 4Y, 5Y, 6Y, 7Y, 8Y, 9Y, 10Y

Kaitlyn Long Dress, a unique dress that's designed to suit any girl perfectly. Due to its spacious figure the dress can be worn during most physical activities with ease. With its pleated top the dress is bound to look absolutely stunning!

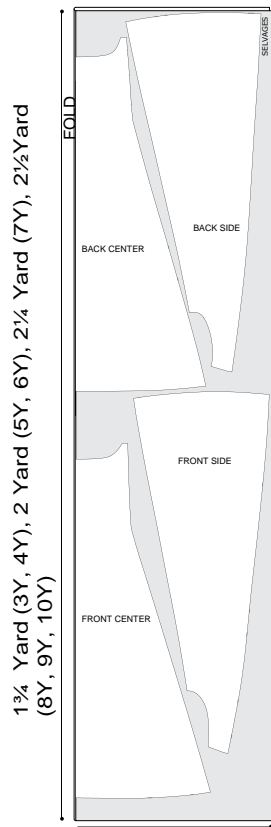
Perfect for any little girls! The Kaitlyn Long Dress!! *Designer's Review*

[Cutting Type A]



44" 45" (110, 115CM)
Cutting Layout: 3Y, 4Y,
5Y, 6Y, 7Y, 8Y, 9Y, 10Y

[Cutting Type B]



44" 45" (110, 115CM)
Cutting Layout: 3Y, 4Y,
5Y, 6Y, 7Y, 8Y, 9Y, 10Y

MATERIAL LIST

FABRIC

44" wide quilting weight cotton or light weight cotton for Dress

[Cutting Type A]	[Cutting Type B]
(1 3/4) Yard for dress(3Y)	(1 3/4) Yard for dress(3Y, 4Y)
(2 1/2) Yard for dress(4Y, 5Y)	(2) Yard for dress(5Y, 6Y)
(3) Yard for dress(6Y)	(2 1/4) Yard for dress(7Y)
(3 1/4) Yard for dress(7Y)	(2 1/2) Yard for dress(8Y, 9Y, 10Y)
(3 1/2) Yard for dress(8Y)	
(4) Yard for dress(9Y)	
(4 1/2) Yard for dress(10Y)	

OTHERS

- (1) Spool of coordinating thread
- (1) 3/8" Button
- (1 1/2) Yard of 1/4" width bias for neck and armhole bias binding (3Y, 4Y, 5Y, 6Y, 7Y, 8Y)
- (1 3/4) Yard of 1/4" width bias for neck and armhole bias binding(9Y, 10Y)

- * All units are in inches.
- * 3/8" seam allowance included,
- * 1 1/4" hem included
- * *A4 and letter size patterns both provided.*

TOOL LIST

Ruler, Scissors, Chalk pencil, Pencil, Sewing machine, Pins, Needle, Shape tool, Safety Pin

SIZE CHART

Age	Height		Chest		Hip	
1-3 month	22.25 in	56 cm	17.75 in	45 cm	18.25 in	46 cm
3-6 month	24.5 in	62 cm	18.5 in	47 cm	19 in	48 cm
6-9 month	25.75 in	68 cm	19.25 in	49 cm	19.75 in	50 cm
9-12 month	29.75 in	74 cm	20.25 in	51 cm	20.5 in	52 cm
12-18 month	31.5 in	80 cm	21 in	53 cm	22.25 in	54 cm
18-24 month	34 in	86 cm	21.75 in	55 cm	22.75 in	56 cm
2 years	36.25 in	92 cm	22.25 in	56 cm	23.75 in	57.6 cm
3 years	38.75 in	98 cm	22.5 in	57 cm	24 in	59.2 cm
4 years	41 in	104 cm	23 in	58 cm	24 in	60.8 cm
5 years	43.5 in	110 cm	23.25 in	59 cm	24.75 in	62.4 cm
6 years	45.75 in	116 cm	23.75 in	60 cm	25.25 in	64 cm
7 years	48 in	122 cm	24.5 in	62 cm	26.25 in	66.5 cm
8 years	50.5 in	128 cm	25.25 in	64 cm	27.25 in	69 cm
9 years	52.75 in	134 cm	26 in	66 cm	28.25 in	71.5 cm
10 years	55.25 in	140 cm	26.75 in	68 cm	29.15 in	74 cm
11 years	57.5 in	146 cm	28.5 in	72 cm	30.75 in	78 cm
12 years	60 in	152 cm	30 in	76 cm	32.25 in	82 cm
13 years	62.25 in	158 cm	31.5 in	80 cm	34 in	88 cm
14 years	64.75 in	164 cm	33 in	84 cm	35.5 in	90 cm
15 years	67 in	170 cm	34.75 in	88 cm	37 in	94 cm
16 years	69.5 in	176 cm	36.25 in	92 cm	38.75 in	98 cm